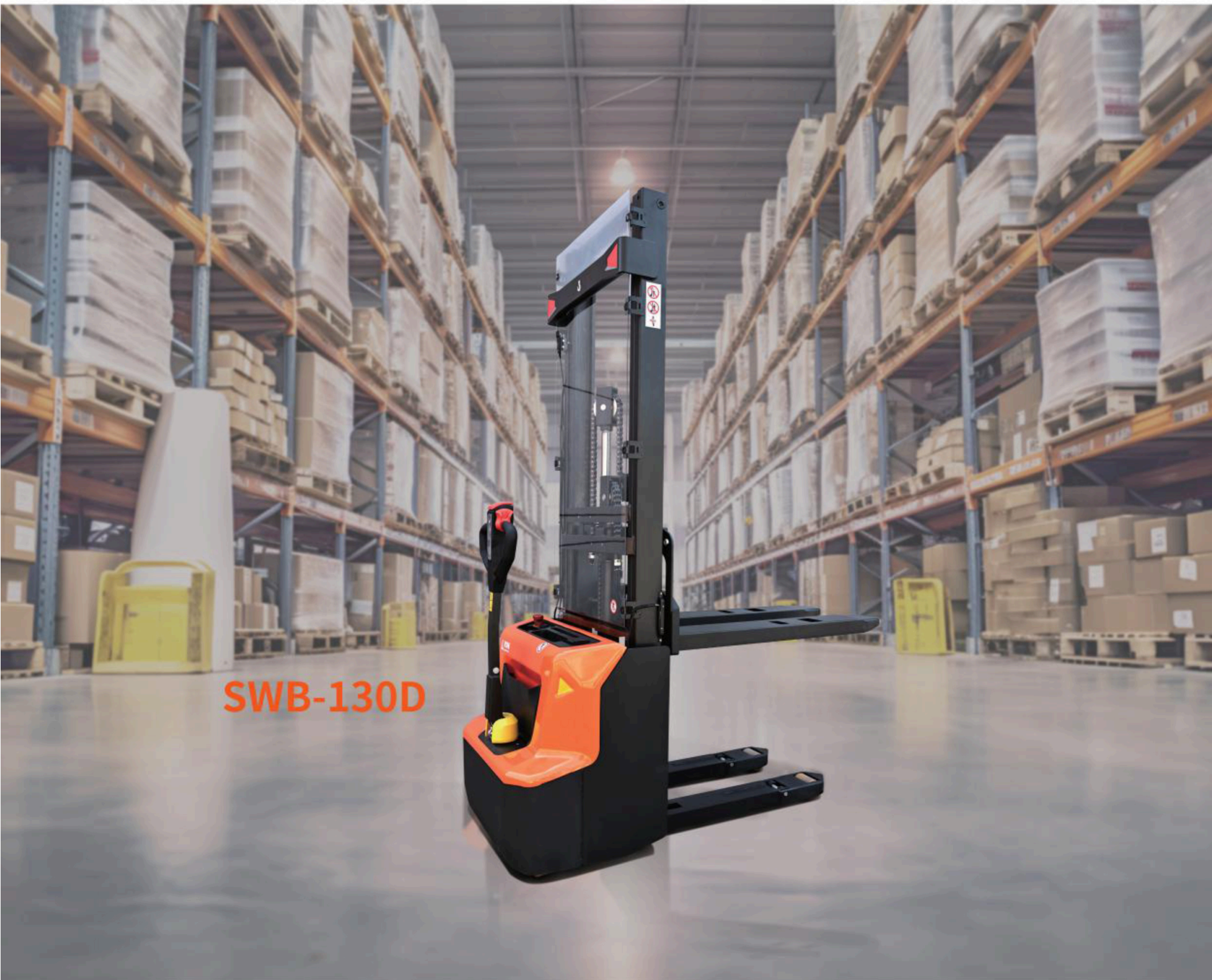


Working Together For A Shared Future

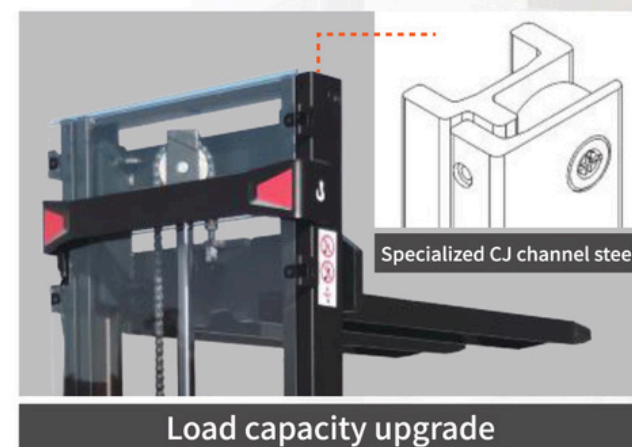
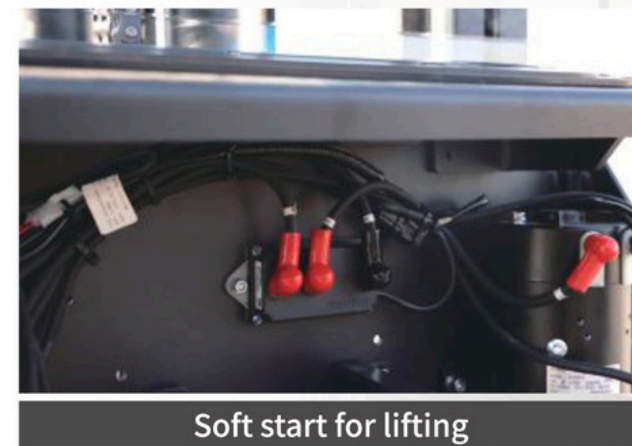
SWB-130/130S/130D

Walkie Electric Stacker



Noblelift Walkie Electric Stacker

With a full free lifting mast, this stacker offers an ideal solution for material handling in confined spaces like supermarkets and internal workshops. Standard with a lithium battery, it ensures quick replacement and charging flexibility.



- Load capacity is upgraded to 1.3t, meeting the needs of customers better.
- The full free lifting mast is an ideal choice for working in limited height spaces.
- Soft start enables more stable and controllable lifting operations.
- Stability and performance of the truck is enhanced greatly via specialized CJ channel steel.
- Vertical drive function enables easy steering in narrow spaces such as lorries and elevators safely.

- External programming port, diagnosing faults without removing the cover. Convenient and fast maintenance.
- Patented chain turning structure with high strength.
- Standard speed reduction at turns ensures stability and safety during large angle turns.
- Special device patented makes it convenient to adjust the pressure on top of supporting wheels without lifting up the machine.



Smart Lithium Battery



SWB-130S



All Li-ion batteries are equipped with built-in Battery Management System(BMS), which provides mandatory control of all important parameters of the battery during charging and operation. With this control, the safety of Li-ion battery during the whole life-cycle is guaranteed. The Li-ion batteries are certified according to international safety transportation (by sea and by air) and operation standards. The BMS communicates with control system of the truck via CAN-BUS, uploading key status data and can make its diagnosis and repair with special software.

SWB-130/130S/130D

The machine can ensure high efficiency even in multiple shifts. Lithium batteries have functions such as fast charging, maintenance free, environmentally friendly, and intelligent display, while also easy to maintain, cost-effective, and improving work efficiency greatly.

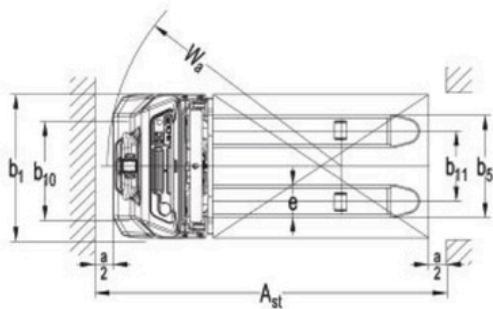
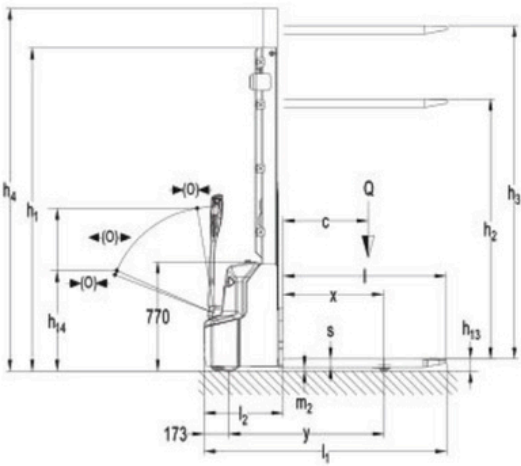
Ergonomic & smart tiller

The tiller of the truck with ergonomic design has comfortable soft grips for comfort daily operation. All buttons are big and can be easily reached by operators even in case of working in gloves. Integrated PIN code panel with LCD display for smart control and operation.



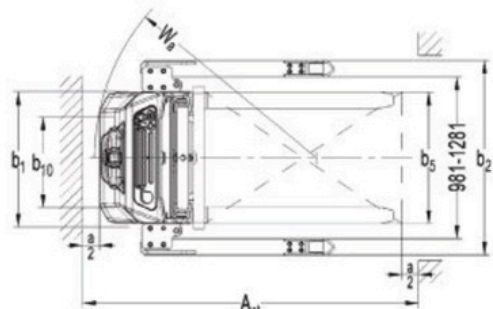
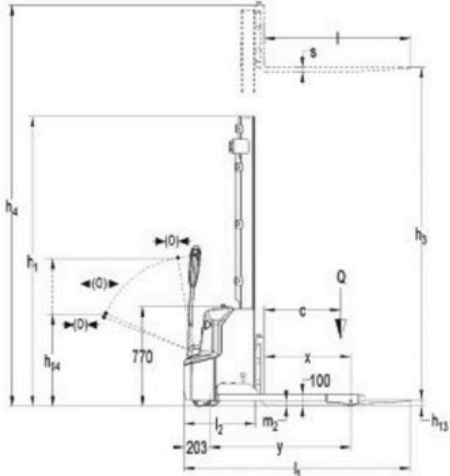
Mast table SWB-130

Designation	Lowered mast height h1 (mm)	Free lift height h2 (mm)	Lift height h3 (mm)	Extended mast height h4 (mm)	Lift + fork height h3 + h13(mm)
Two-stage mast	1780	1300	2510	2990	2600
	1930	1450	2810	3290	2900
	2080	1600	3110	3590	3200
	2280	1800	3510	3990	3600



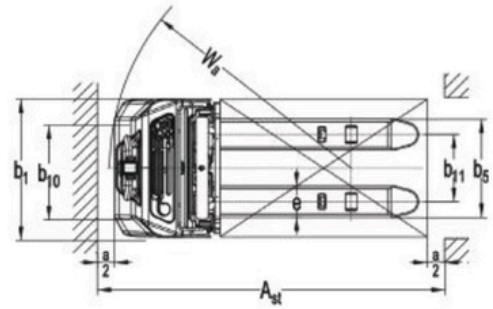
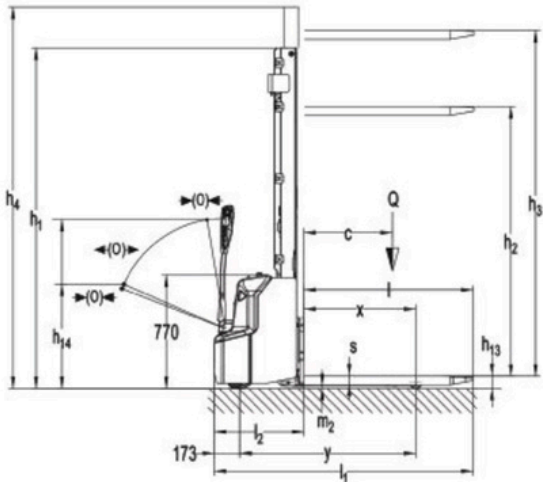
Mast table SWB-130S

Designation	Lowered mast height h1 (mm)	Free lift height h2 (mm)	Lift height h3 (mm)	Extended mast height h4 (mm)	Lift + fork height h3 + h13(mm)
Two-stage mast	1790	1300	2514	2059	2564
	1940	1450	2814	3359	2864
	2090	1600	3114	3659	3164
	2290	1800	3514	4059	3564



Mast table SWB-130D

Designation	Lowered mast height h1 (mm)	Free lift height h2 (mm)	Lift height h3 (mm)	Extended mast height h4 (mm)	Lift + fork height h3 + h13(mm)
Two-stage mast	1820	1300	2510	3030	2600
	1970	1450	2810	3330	2900
	2120	1600	3110	3630	3200
	2320	1800	3510	4030	3600



Type sheet for industrial truck acc. to VDI 2198				No.20240703
Distinguishing mark				
1.2	Manufacturer`s type designation		SWB-130 3600FFL	SWB-130S 3600FFL
1.3	Power (battery ,diesel, petrol, gas, manual)		Battery	Battery
1.4	Operator type		Pedestrian	Pedestrian
1.5	Load Capacity / rated load	Q (t)	1.3	1.27
1.6	Load centre distance	c (mm)	600	600
1.8	Load distance ,centre of drive axle to fork	x (mm)	710	674
1.9	Wheelbase	y (mm)	1097	1111
Weight				
2.1	Service weight	kg	670	835
2.2	Axle loading, laden front/rear	kg	560/1410	635 / 1470
2.3	Axle loading, unladen front/rear	kg	480/190	595 / 240
Tires, chassis				
3.1	Tires		Polyurethane (PU)	Polyurethane (PU)
3.2	Tire size, front	Øxw (mm)	Ø210×75	Ø210 x 75
3.3	Tire size, rear	Øxw (mm)	Ø84x93	Ø84x93
3.4	Additional wheels(dimensions)	Øxw (mm)	Ø 100x50	Ø 100x40
3.5	Wheels, number front/rear(x=driven wheels)		1x +1/2	1x + 2/2
3.6	Track, front	b10 (mm)	550	520
3.7	Track, rear	b11 (mm)	400/515	/
Dimensions				
4.2	Lowered mast height	h1 (mm)	2280	2290
4.3	Free Lift height	h2 (mm)	1800	1800
4.4	Lift height	h3 (mm)	3514	3514
4.5	Extended mast height	h4 (mm)	3990	4054
4.9	Height of tiller in drive position min./ max.	h14 (mm)	710/1150	710/1150
4.15	Height, lowered	h13 (mm)	90	50
4.19	Overall length	l1 (mm)	1710	1790
4.20	Length to face of forks	l2 (mm)	560	640
4.21	Overall width	b1 (mm)	800	800 / (1181 / 1231 / 1281 / 1381 / 1481)
4.22	Fork dimensions	s/e/l (mm)	60/180/1150	40/100/1150
4.25	Width across forks	b5 (mm)	570/685	252-800
4.32	Ground clearance, centre of wheelbase	m2 (mm)	24	40
4.33	Aisle width for pallets 1000X1200 crossways	Ast (mm)	2167	2228
4.34	Aisle width for pallets 800X1200 lengthways	Ast (mm)	2133	2206
4.35	Turning radius	Wa (mm)	1300	1345
Performance data				
5.1	Travel speed, laden/ unladen	km/h	4.2/4.5	4.2/4.5
5.2	Lift speed, laden/ unladen	m/s	0.10/0.14	0.10/0.14
5.3	Lowering speed, laden/ unladen	m/s	0.13/ 0.11	0.13/ 0.11
5.8	Max. gradeability, laden/ unladen	%	4 / 10	4 / 10
5.10	Service brake		electromagnetic	electromagnetic
Electric- engine				
6.1	Drive motor rating S2 60min	kW	0.65	0.65
6.2	Lift motor rating at S3 7.5%	kW	2.2	2.2
6.3	Battery acc. to DIN 43531/35/36 A, B, C, no		no	no
6.4	Battery voltage, nominal capacity K5	V/Ah	24/100	24/100
6.5	Battery weight +/-5%	kg	26	26
6.6	Energy consumption acc: to VDI cycle	KWh/h	0.68	0.6
Additional data				
8.1	Type of drive control		DC	DC
8.4	Sound level at driver`s ear acc. to EN 12053	dB (A)	<70	<70

Type sheet for industrial truck acc. to VDI 2198				No.20240703
Distinguishing mark				
1.2	Manufacturer`s type designation		SWB-130D 3600FFL	
1.3	Power (battery ,diesel, petrol, gas, manual)		Battery	
1.4	Operator type		Pedestrian	
1.5	Load Capacity / rated load	Q (t)	1.3 ¹⁾	
	Load Capacity / rated load (mast lift)		1.3	
	Load Capacity / rated load (support arm lift)		1.3	
1.6	Load centre distance	c (mm)	600	
1.8	Load distance ,centre of drive axle to fork	x (mm)	769 / 686 ²⁾	
1.9	Wheelbase	y (mm)	1198 / 1115 ²⁾	
Weight				
2.1	Service weight	kg	745	
2.2	Axle loading, laden front/rear	kg	650/1395	
2.3	Axle loading, unladen front/rear	kg	520/225	
Tires, chassis				
3.1	Tires		Polyurethane (PU)	
3.2	Tire size, front	Øxw (mm)	Ø210×75	
3.3	Tire size, rear	Øxw (mm)	Ø84x93	
3.4	Additional wheels(dimensions)	Øxw (mm)	Ø 100x50	
3.5	Wheels, number front/rear(x=driven wheels)		1x +1/2	
3.6	Track, front	b10 (mm)	550	
3.7	Track, rear	b11 (mm)	400/515	
Dimensions				
4.2	Lowered mast height	h1 (mm)	2320	
4.3	Free Lift height	h2 (mm)	1800	
4.4	Lift height	h3 (mm)	3510	
4.5	Extended mast height	h4 (mm)	4030	
4.6	Initial lift	h5 (mm)	120	
4.9	Height of tiller in drive position min./ max.	h14 (mm)	710/1150	
4.15	Height, lowered	h13 (mm)	90	
4.19	Overall length	l1 (mm)	1762	
4.20	Length to face of forks	l2 (mm)	612	
4.21	Overall width	b1 (mm)	800	
4.22	Fork dimensions	s/e/l (mm)	60/180/1150	
4.25	Width across forks	b5 (mm)	570/685	
4.32	Ground clearance, centre of wheelbase	m2 (mm)	16	
4.33	Aisle width for pallets 1000X1200 crossways	Ast (mm)	2244 / 2196 ²⁾	
4.34	Aisle width for pallets 800X1200 lengthways	Ast (mm)	2190 / 2170 ²⁾	
4.35	Turning radius	Wa (mm)	1401 / 1318 ²⁾	
Performance data				
5.1	Travel speed, laden/ unladen	km/h	4.2/4.5	
5.2	Lift speed, laden/ unladen	m/s	0.10/0.14	
5.3	Lowering speed, laden/ unladen	m/s	0.13/ 0.11	
5.8	Max. gradeability, laden/ unladen	%	4 / 10	
5.10	Service brake		electromagnetic	
Electric- engine				
6.1	Drive motor rating S2 60min	kW	0.65	
6.2	Lift motor rating at S3 7.5%	kW	2.2	
6.3	Battery acc. to DIN 43531/35/36 A, B, C, no		no	
6.4	Battery voltage, nominal capacity K5	V/Ah	24/100	
6.5	Battery weight +/-5%	kg	26	
6.6	Energy consumption acc: to VDI cycle	KWh/h	-	
Additional data				
8.1	Type of drive control		DC	
8.4	Sound level at driver`s ear acc. to EN 12053	dB (A)	<70	

1) when operate the fork and pallet at the same time: Load Capacity / rated load (mast lift) < Load Capacity / rated load (support arm lift).

2) Load section lowered / Load section raised.